

Product Description

La TeraPlug is supplied as a ready to use blend of dry powder which requires only the addition of clean water at site to produce a highly consistent, rapid setting mortar which is easy to apply in many difficult conditions. The material is based on a blend of cements, graded aggregates, special fillers and chemical additives which control the rate of set and minimise the risk of thermal cracking.

Uses

For the rapid temporary patching and plugging of concrete segments, concrete and brick tunnel linings, sewage systems, below ground access chambers, pipes, basements, foundations and mines.

Advantages

- Emergency water stopping capability
- Single component - only the addition of clean water is required.
- Excellent bond to the substrate
- Low exotherm minimises thermal cracking
- Pre-packed formulation to overcome variation in site batching
- Contains no chloride admixtures.

Design Criteria

La TeraPlug can be applied to horizontal, vertical or overhead surface at a wide range of thickness. Generally, the volume of mixed material used in a single application is restricted to that which can be applied by trowel or gloved hand. Thicker sections can be built up in layers. If any doubt arises about the nature of the substrate.

Technical Properties

Usable Life < 2.5 minutes at 30°C

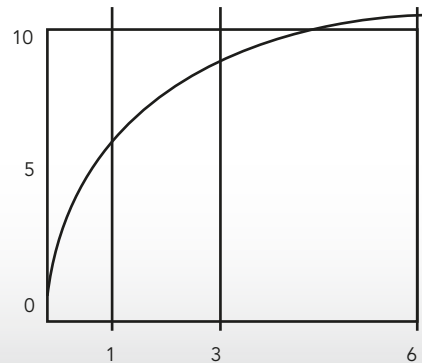
Note : Set times will be extended when mixed or applied at lower temperatures.

Density : 1280kg/m³

Compressive strength : 30N/mm² @ 28 days @ 30°C

Heat generation characteristics : High heat output (exotherm) leads to undesirably high shrinkage and consequent thermal cracking. The curves below show the low heat output of La TeraPlug which minimises the risk of shrinkage and thermal cracking.

Compressive Strength N/mm²



Age (hours) Early age compressive strength @ 30°C

Specification clauses

Water stopping mortar

The water stopping mortar shall be La TeraPlug, a single component cement based product to which only the site - addition of clean water shall be permitted. It must be chloride free and shall have a low exotherm to minimise thermal cracking.

Application Instructions

Surface preparation

Areas to be patched should be cut back to a depth of 15mm and given a good mechanical key. Feather edges must not be allowed. Surface should be brushed clean to remove loose material, dust and laitance. Grease, slime or mould growth should be removed by steam cleaning or high pressure water jetting. A proprietary degreasing agent should be used for removal of light oil or grease contamination.

To seal leaks, crack openings must be chased out to approximately 20mm. The chase should always be undercut to avoid leaving a V-section. All loose material and debris should be removed.

Mixing

La TeraPlug should be added to clean water in the following proportions : One part clean water : 4 parts La TeraPlug (measured by volume).

Mix to a stiff consistency in a suitable container using a trowel or gloved hand. Due to the rapid set characteristics of the product, only prepare a quantity of mortar which can be placed within the prescribed set time.

Application

Trowel apply or hand-knead the mixed mortar in place, ensuring maximum contact with the substrate before the material sets. If being used to plug running water, La TeraPlug should be used and held in place until the initial set is reached.

Cleaning

La TeraPlug should be removed from tools, equipment and mixers with clean water prior to the initial set. Cured material can only be removed mechanically.

Limitations

La TeraPlug should not be used when the temperature is below 10°C and falling.

Package

La TeraPlug is available in 2, 5 & 20kg

Shelf Life

La TeraPlug has a shelf life of 6 months if kept in a dry store in the original, unopened bags.

Health & Safety

La TeraPlug contains cement powders which, when mixed or become damp, release alkalis which can be harmful to the skin. During use, avoid inhalation of dust and contact with skin and eyes. Wear suitable protective clothing, gloves, eye protection and respiratory protective equipment. The use of barrier creams provide additional skin protection. In case of contact with skin, rinse with plenty of clean water, then cleanse with soap and water. In case of contact with eyes, rinse immediately with plenty of clean water and seek medical advice. If swallowed, seek medical attention immediately - do not induce vomiting.

Fire

La TeraPlug is non-flammable.

Important: La Greens India Pvt. Ltd., products are guaranteed against defective materials and are sold subject to its standard terms and conditions of sale. It is the Customer's responsibility to satisfy themselves by checking with the Company whether the information is still current at the time of use. The customer must be satisfied that the product is suitable for the use intended. All products comply with the properties shown on current Technical Literatures. However, **La Greens India** does not warranty or guarantee the installation of the products as it does not have any control over installation or end use of the product. All information and particularly the recommendation relating to application and end use are given in good faith.



La Greens India Pvt. Ltd.

(Formerly Known as Lacrete Durakem (India) Pvt. Ltd.)
No.136, SLV Arcade, 2nd Floor, 1st K Block,
Dr. Rajkumar Road, Rajaji Nagar, Bangalore 560 010.

+91 80 4157 1956 | info@lagreensindia.com | www.lagreensindia.com

Manufacturing Unit :

Plot No.154, KIABD Indl. Area, 2nd Phase,
Antharasanahalli, Tumkur - 572106, Karnataka



An ISO : 9001 Accredited Company